

High Identity Industrial / Warehouse Complex



Great "In-Town" Location
Office, Retail & Warehouse Location
High End Industrial Complex
Good Parking
Easy access to Hwy. 101
Great Visibility
Located on one of the busiest streets
in Santa Rosa!

915-D&E: 4,845 +/-sf
917-E: 7,524 +/-sf
917-G: 4,251 +/-sf
*10,000 +/- sf Build-to-Suit
Available

Zoned Light Industrial:
Bulk Retail
Health / Fitness
Dance / Music
Martial Arts
Gymnastics
Arts / Crafts
Printing / Publishing
Graphics
Manufacturing
Processing
Furniture Sales / Manufacturing
Repair Servies / Automotive
Plumbing / Electric / Tile & Granite

\$0.65-\$0.85 psf
Modified Gross
\$0.11 psf CAM

Please Contact:
Tanya Montreal, Senior Associate
TMontreal@stggroup.com
707-623-1106
Jim Ballard, Director of Leasing
JBallard@stggroup.com
THE STG GROUP
1260 N. Dutton Ave. Suite 270
Santa Rosa, CA. 95401
707-569-9000
www.stggroup.com



FULL COMMISSION TO PROCURING BROKER!



User Space: Office, Retail, Warehouse

City: Santa Rosa, CA. 95403
County of Sonoma

Address: 915 - 921 Piner Road

Zoning: IL

Rentable Area Available: 26,620 +/- sf
*10,000 +/- sf Build-to-Suit Available

Rent: \$0.65-\$0.85
Modified Gross
\$0.11 psf CAM

Total Building s.f.: 83,519 +/- sf

Size Range: 4,251 +/- sf - 7,524 +/- sf

Parking: 2:1,000

Description of Premises - Features:

There is one unit still available. Zoning for this building is Light Industrial and this space is perfect for all industrial business types from warehouse, manufacturing, processing, to repair services.

1. 915 D&E: 4,845 +/-sf

3. 917 G: 4,251 +/-sf

2. 917 E: 7,524 +/-sf

4. 10,000 +/-sf Build-to-Suit (call for details)

Lease Terms: One to Five Years

Description of Location - Area: Excellent location in Northwest Santa Rosa with easy freeway access.
Cross streets include: Cleveland Avenue, Range Avenue and Airway Drive.

Please Contact:
Tanya Montreal, Senior Associate
TMontreal@stggroup.com
707-623-1106
Jim Ballard, Director of Leasing
JBallard@stggroup.com
THE STG GROUP
1260 N. Dutton Ave. Suite 270
Santa Rosa, CA. 95401
707-569-9000
www.stggroup.com

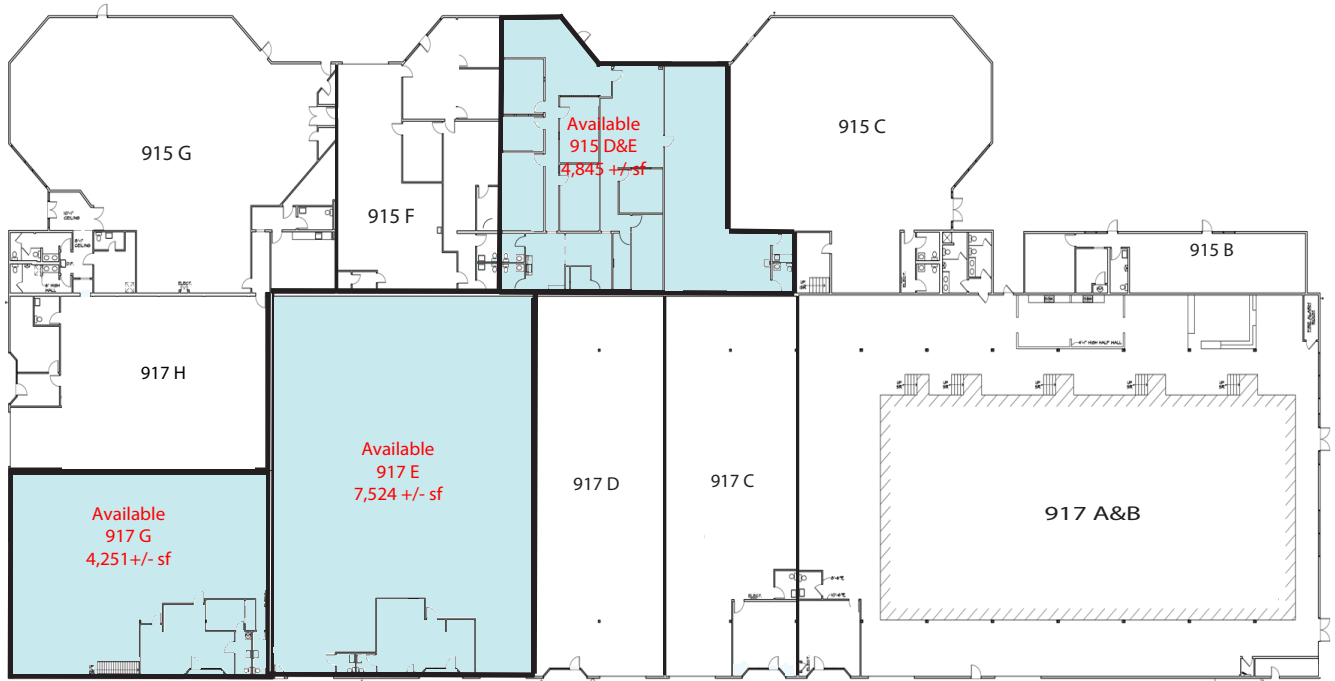


Alaska, Northern California, Central California, Southern California and Washington



915 - 921 Piner Road Santa Rosa, CA. County of Sonoma

Build-to-Suit
10,000 +/- sf
Available



Sports City
921

Please Contact:
Tanya Montreal, Senior Associate
TMontreal@stggroup.com
707-623-1106
Jim Ballard, Director of Leasing
JBallard@stggroup.com
THE STG GROUP
1260 N. Dutton Ave. Suite 270
Santa Rosa, CA. 95401
707-569-9000
www.stggroup.com