

Bay Cities Industrial Park

1631-1645 16th Street / 1630-1646 17th Street



**Santa Monica's
Best Economic
Alternative**



Project Size	Approximately 70,000 rentable square feet
Available Suites	See Reverse
Lease Term	1 -10 Years
Rental Rate	\$2.10 per RSF, per month, NNN
Approximate NNN Charges	\$0.58
Parking	2/1,000 SF Leased; \$85.00 per Space

PROPERTY HIGHLIGHTS	
<ul style="list-style-type: none"> • Close proximity to Downtown Santa Monica and West Los Angeles • Creative campus environment • Office / Flex Space • Santa Monica Memorial Park directly across the street • Excellent freeway access 	



www.madisonpartners.net

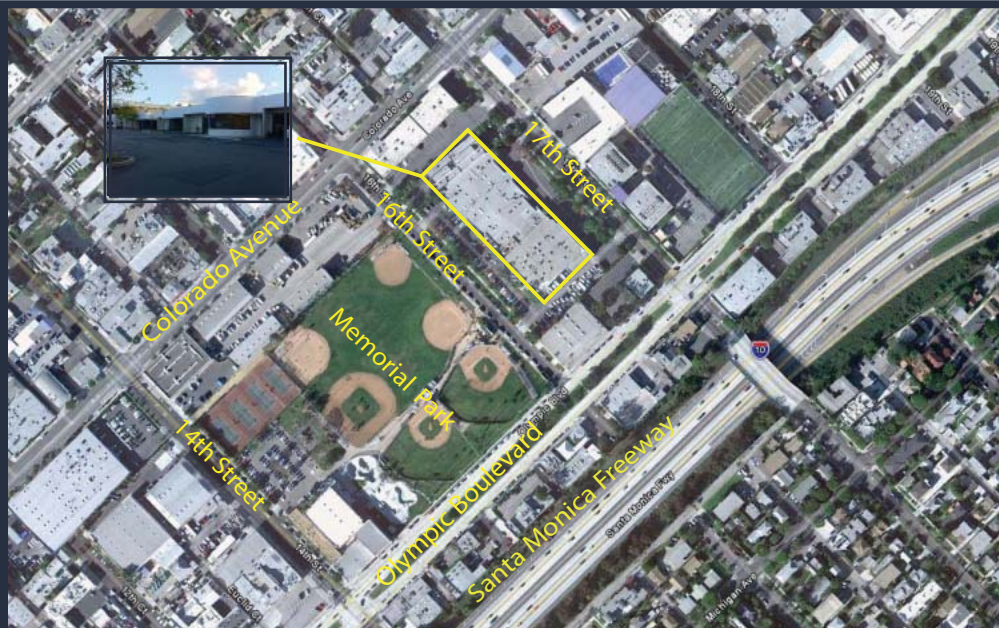
**FOR LEASING INQUIRIES CONTACT
Madison Partners • 310.820.5959**

Joe King
jking@madisonpartners.net
 DRE Number: 01195833
 310.442.3375

© 2011 Madison Partners (DRE License Number: 00978067). The information above has been obtained from sources believed reliable. While we do not doubt its accuracy, we have not verified it and make no guarantee, warranty or representation about it. It is your responsibility to independently confirm its accuracy and completeness. Any projections, opinions, assumptions or estimates used are for example only and do not represent the current or future performance of the property. The value of this transaction to you depends on tax and other factors which should be evaluated by your tax, financial and legal advisors. You and your advisors should conduct a careful, independent investigation of the property to determine to your satisfaction the suitability of the property for your needs.

Bay Cities Industrial Park

1631-1635 16th Street / 1630-1646 17th Street



Available For Lease

Up To 1,906 SF of

Creative Space



www.madisonpartners.net

**FOR LEASING INQUIRIES
CONTACT:**

Madison Partners • 310.820.5959

Joe King
jking@madisonpartners.net
 DRE Number: 01195833
 310.442.3375



Available Spaces

Space	RSF	Description
1641 16th Street <i>AVAILABLE 3/1/2012</i>	1,906	2 offices, roll-up door, skylights and large open area