



Keegan & Coppin
COMPANY, INC.

FOR LEASE

915-917 PINER ROAD
SANTA ROSA, CA

**WAREHOUSE SPACE
AVAILABLE FOR LEASE**



Go beyond broker.

REPRESENTED BY:

DAVE PETERSON, SENIOR PARTNER
LIC # 01280039 (707) 528-1400 EXT 210
DPETERSON@KEEGANCOPPIN.COM



915-917 PINER ROAD
SANTA ROSA, CA

**WAREHOUSE
SPACE AVAILABLE
FOR LEASE**

PROPERTY SUMMARY

- Buildings Available:
915B: 1,404 SF
917: 15,300 SF
- High-End Industrial Complex
- Easy Access to Highway 101
- 18' ft Clear-Height in Warehouse
- Two 14' ft Roll-Up Doors to Space
- 480v 3 Phase Power

LEASE RATE

915B PINER: \$1.25 GROSS
917 PINER: \$1.25 GROSS



USER SPACE
Industrial

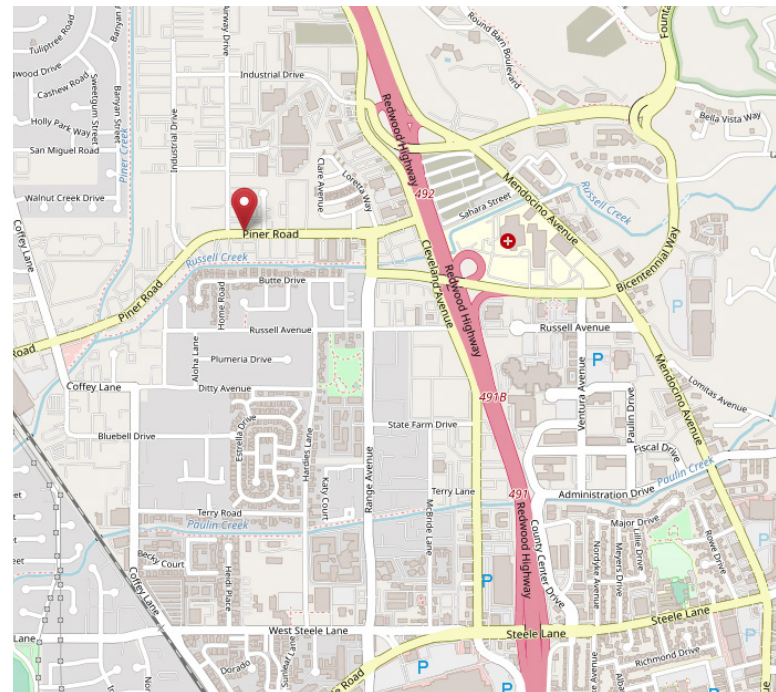
ZONING
IL (Light Industrial)

TOTAL BUILDING S.F.
83,519 +/- Sq Ft

PARKING
On-Site

DESCRIPTION OF LOCATION

Excellent location in Northwest Santa Rosa with easy freeway access. Cross streets include Cleveland Avenue, Range Avenue, and Airway Drive



PRESENTED BY: **DAVE PETERSON, SENIOR PARTNER**
LIC # 01280039 (707) 528-1400, EXT 210
DPETERSON@KEEGANCOPPIN.COM

The above information, while not guaranteed, has been secured from sources we believe to be reliable. Submitted subject to error, change or withdrawal. An interested party should verify the status of the property and the information herein.



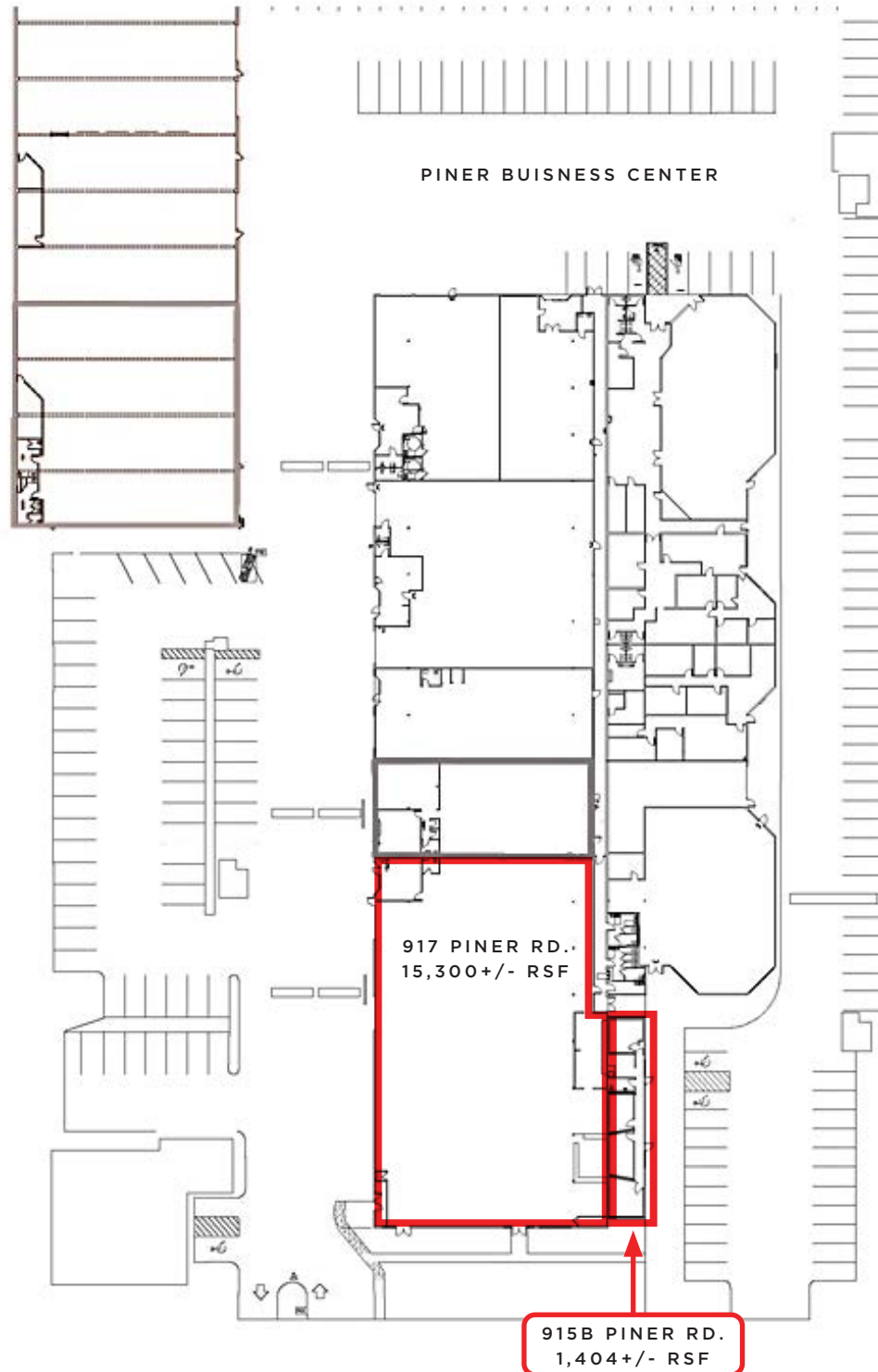
Keegan & Coppin
COMPANY, INC.



915-917 PINER ROAD
SANTA ROSA, CA

**WAREHOUSE
SPACE AVAILABLE
FOR LEASE**

SITE PLAN



PRESENTED BY: DAVE PETERSON, SENIOR PARTNER
LIC # 01280039 (707) 528-1400, EXT 210
DPETERSON@KEEGANCOPPIN.COM

The above information, while not guaranteed, has been secured from sources we believe to be reliable. Submitted subject to error, change or withdrawal. An interested party should verify the status of the property and the information herein.