



Keegan & Coppin
COMPANY, INC.

FOR LEASE

915-921 PINER ROAD
SANTA ROSA, CA

**WAREHOUSE SPACE
AVAILABLE FOR LEASE**



Go beyond broker.

REPRESENTED BY:

DAVE PETERSON, SENIOR PARTNER
LIC # 01280039 (707) 528-1400 EXT 210
DPETERSON@KEEGANCOPPIN.COM



915-921 PINER ROAD
SANTA ROSA, CA

**WAREHOUSE
SPACE AVAILABLE
FOR LEASE**

PROPERTY SUMMARY

- Building 915: 15,300 SF / Building 917: 3,774 SF
- High-End Industrial Complex
- Easy Access to Highway 101
- 18' ft Clear-Height in Warehouse
- Two 14' ft Roll-Up Doors to Space
- 480v 3 Phase Power

LEASE RATE

\$1.10 / SQ FT GROSS



USER SPACE

Industrial

ZONING

IL (Light Industrial)

TOTAL BUILDING S.F.

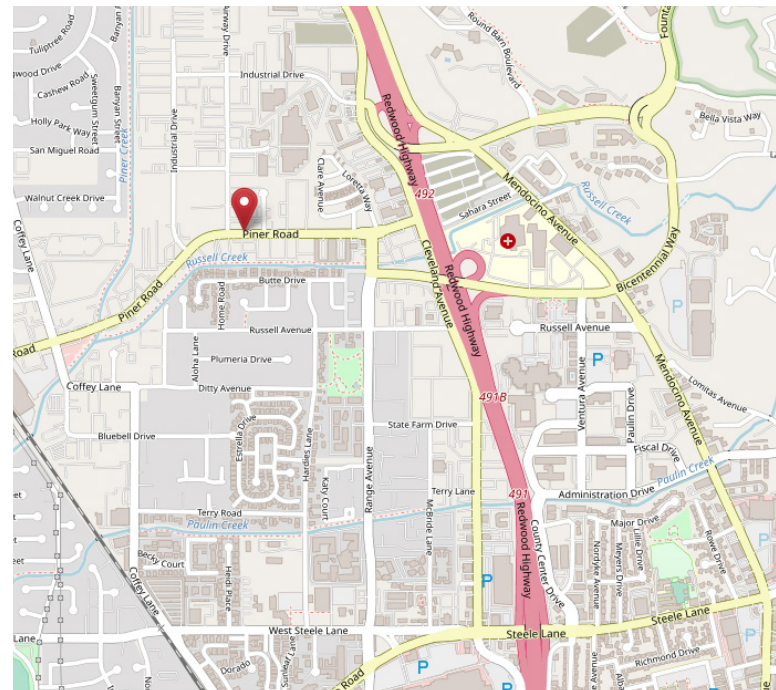
83,519 +/- Sq Ft

PARKING

On-Site

DESCRIPTION OF LOCATION

Excellent location in Northwest Santa Rosa with easy freeway access. Cross streets include Cleveland Avenue, Range Avenue, and Airway Drive



PRESENTED BY: DAVE PETERSON, SENIOR PARTNER
LIC # 01280039 (707) 528-1400, EXT 210
DPETERSON@KEEGANCOPPIN.COM

The above information, while not guaranteed, has been secured from sources we believe to be reliable. Submitted subject to error, change or withdrawal. An interested party should verify the status of the property and the information herein.



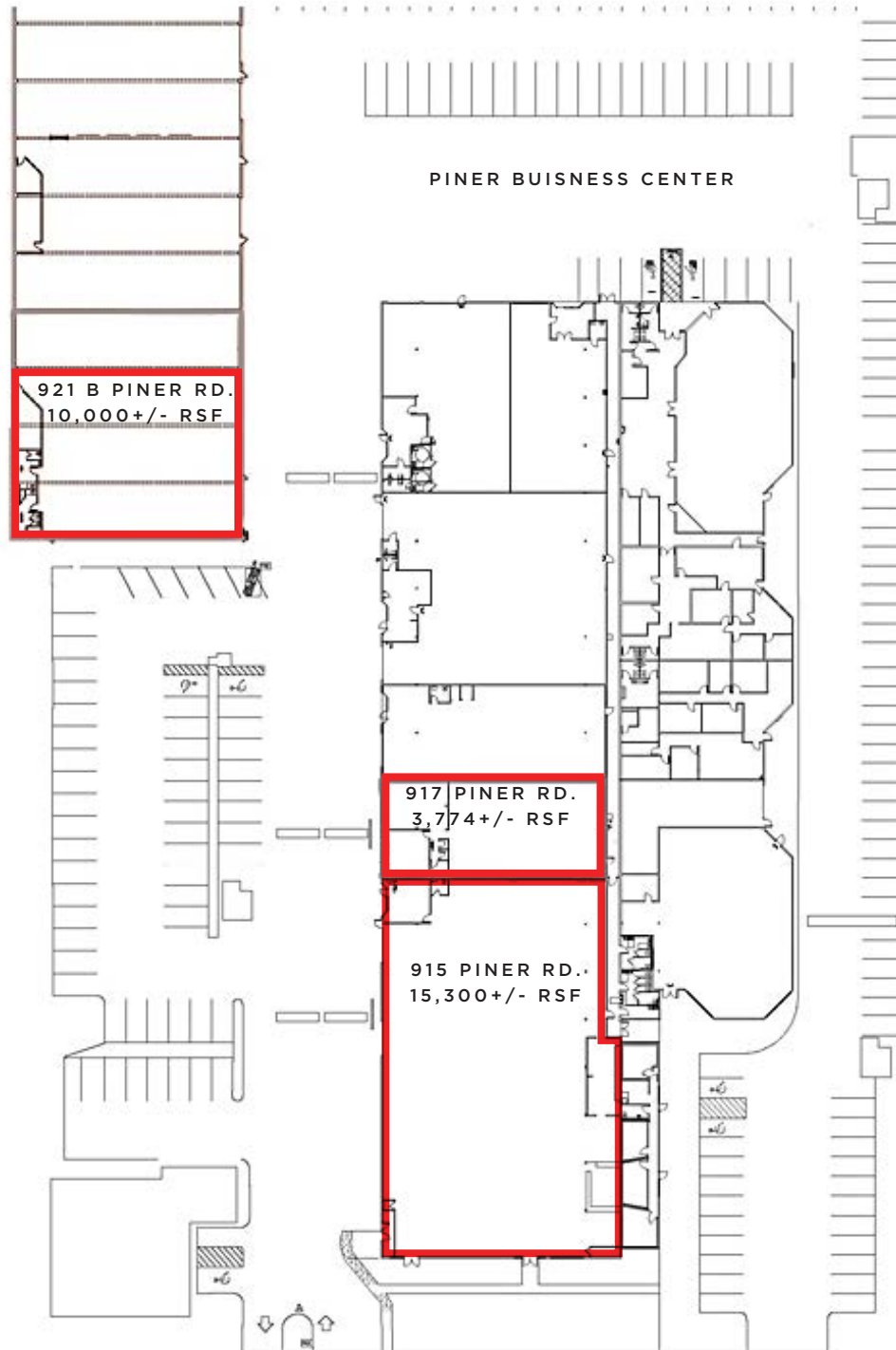
Keegan & Coppin
COMPANY, INC.



915-921 PINER ROAD
SANTA ROSA, CA

**WAREHOUSE
SPACE AVAILABLE
FOR LEASE**

SITE PLAN



PRESENTED BY:

DAVE PETERSON, SENIOR PARTNER
LIC # 01280039 (707) 528-1400, EXT 210
DPETERSON@KEEGANCOPPIN.COM

The above information, while not guaranteed, has been secured from sources we believe to be reliable. Submitted subject to error, change or withdrawal. An interested party should verify the status of the property and the information herein.