



OFFICE SPACE FOR LEASE IN FOUNTAINGROVE

FOUNTAINGROVE CORPORATE CENTRE | 3510 UNOCAL PLACE, SANTA ROSA, CA

2,602 RSF OFFICE SPACE AVAILABLE – SUITE 208



ALASKA, NORTHERN CALIFORNIA,
CENTRAL CALIFORNIA, SOUTHERN
CALIFORNIA, OREGON AND
WASHINGTON

WWW.STGGROUP.COM

**Starting at \$2.20 PSF
FULL SERVICE**

CONTACT

Jim Ballard | Director of Leasing
JBallard@stggroup.com

Fredy Anaya | Leasing Department
FAnaya@stggroup.com

THE STG GROUP
1304 Southpoint Blvd., Suite 250
Petaluma, CA 94954
707.569.9000



OVERVIEW

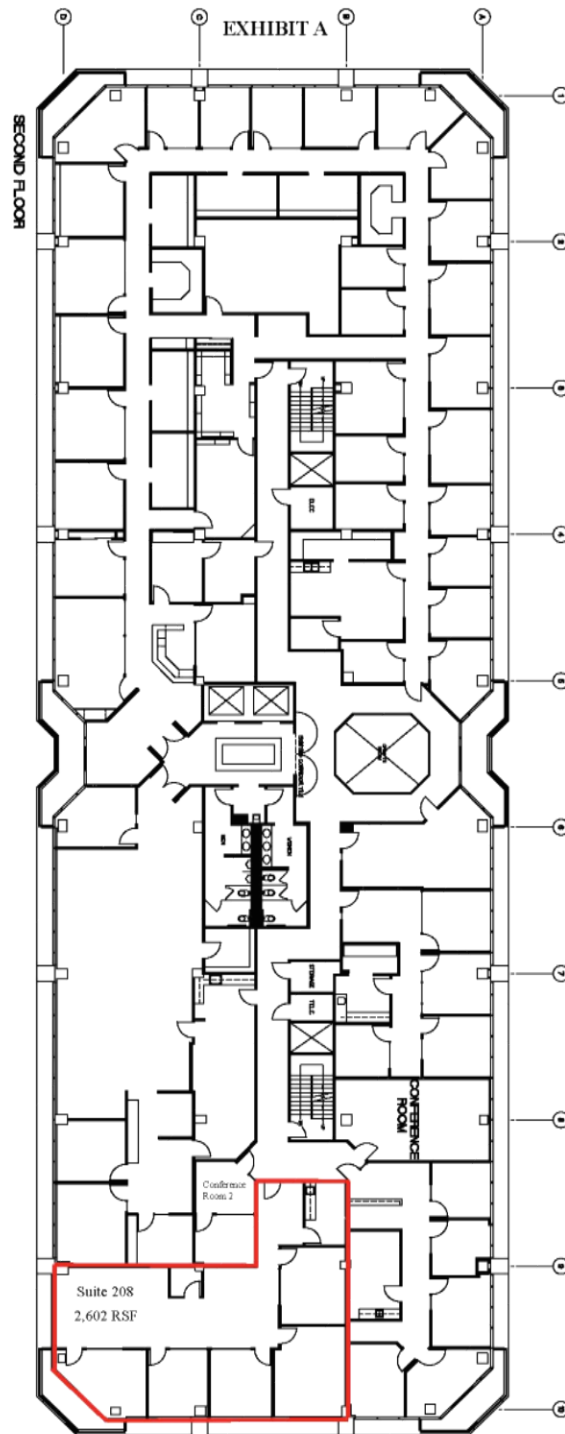
- Close Proximity to Freeways
- Unparalleled views from class A offices in the prestigious Fountaingrove Area
- Easy access to walking paths
- Common Area Conference Room
- Parking Ratio 4/1,000 sf.
- Large Outdoor Terrace
- Attractive Office Spaces
- Energy Star building, green operations

SPACE AVAILABLE

**Suite 208 +/- 2,602 rsf
(Available Immediately)**

OFFICE SPACE IN FOUNTAINGROVE FOR LEASE

3510 Unocal Place , Santa Rosa, CA



Jim Ballard, Director of Leasing JBallard@stggroup.com | Fredy Anaya, Leasing Department FAnaya@stggroup.com
1304 Southpoint Blvd., Suite 250, Petaluma, CA 94954 | 707.569.9000 Office | 707.569.8582 Fax | www.stggroup.com
Alaska, Northern California, Central California, Southern California, Oregon, and Washington

The above information, while not guaranteed, has been secured from sources we believe to be reliable. Subject to error, change or withdrawal. An interested party should verify the status of the property and the information herein.