



OFFICE SPACE FOR LEASE IN FOUNTAININGROVE

FOUNTAINGROVE CORPORATE CENTRE | 3510 UNOCAL PLACE, SANTA ROSA, CA

3,329 RSF (1st Floor) - 13,051 RSF (2nd Floor) – 16,377 RSF (3rd Floor) OFFICE SPACE AVAILABLE



ALASKA, NORTHERN CALIFORNIA,
CENTRAL CALIFORNIA, SOUTHERN
CALIFORNIA, OREGON AND
WASHINGTON

WWW.STGGROUP.COM

**Starting at \$2.20 PSF
FULL SERVICE**

CONTACT

Jim Ballard | Director of Leasing
JBallard@stgroup.com

Kassandra Delgado | Leasing Associate
Kdelgado@stgroup.com

THE STG GROUP
1304 Southpoint Blvd., Suite 280
Petaluma, CA 94954
707.569.9000



OVERVIEW

- Close Proximity to Freeways
- Unparalleled views from class A offices in the prestigious Fountaingrove Area
- Easy access to walking paths
- Common Area Conference Room
- Parking Ratio 4/1,000 sf.
- Large Outdoor Terrace
- Attractive Office Spaces
- Energy Star building, green operations

SPACE AVAILABLE

***Suite 104 +/- 1,096 RSF**

***Suite 105 +/- 2,233 RSF**

***contiguous 3,329 RSF**

Suite 200 +/- 6,184 RSF

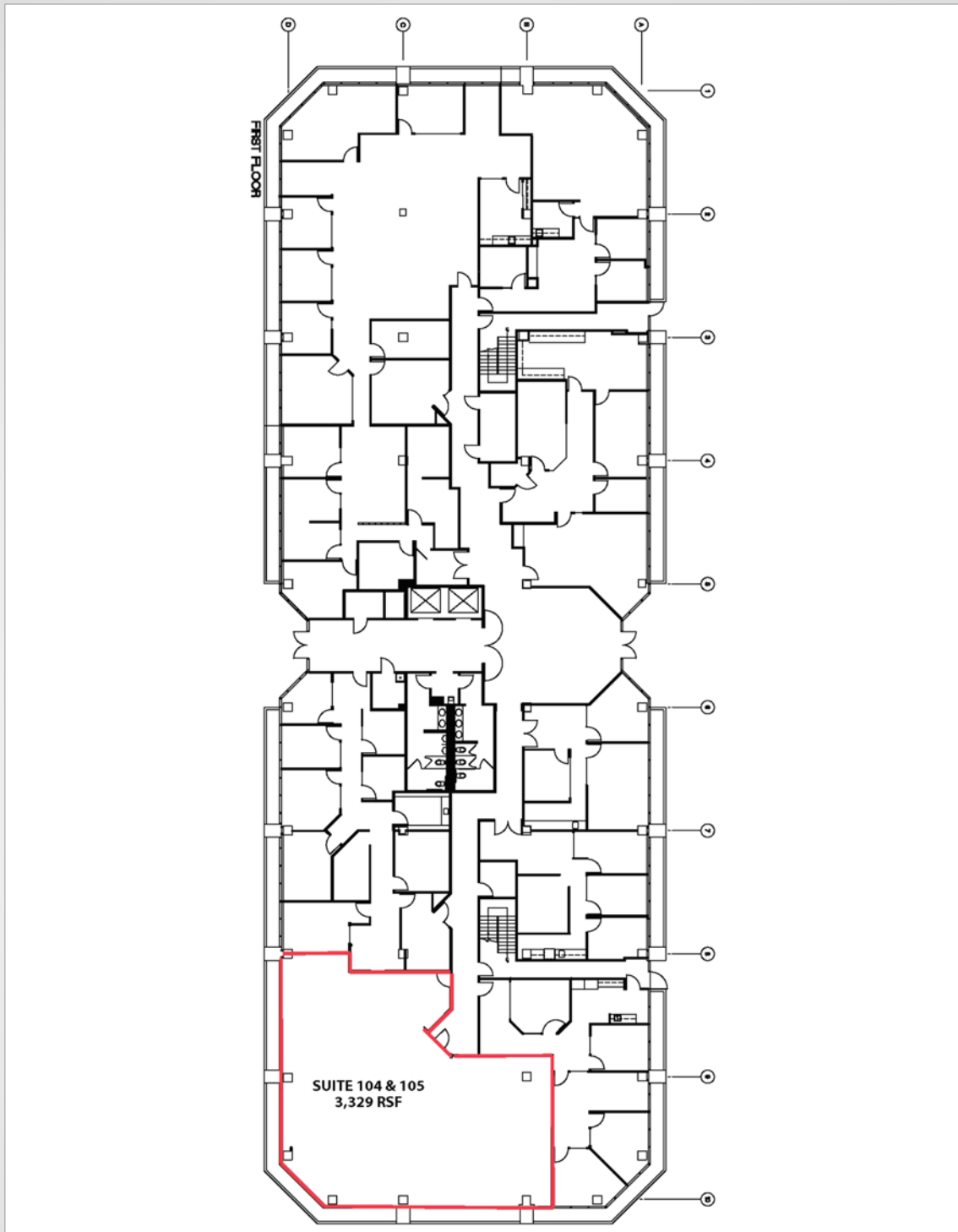
Suite 300 +/- 6,107 RSF


Suite 302 +/- 1,586 RSF

Suite 350 +/- 10,270 RSF

OFFICE SPACE IN FOUNTAINGROVE FOR LEASE

3510 Unocal Place , Santa Rosa, CA

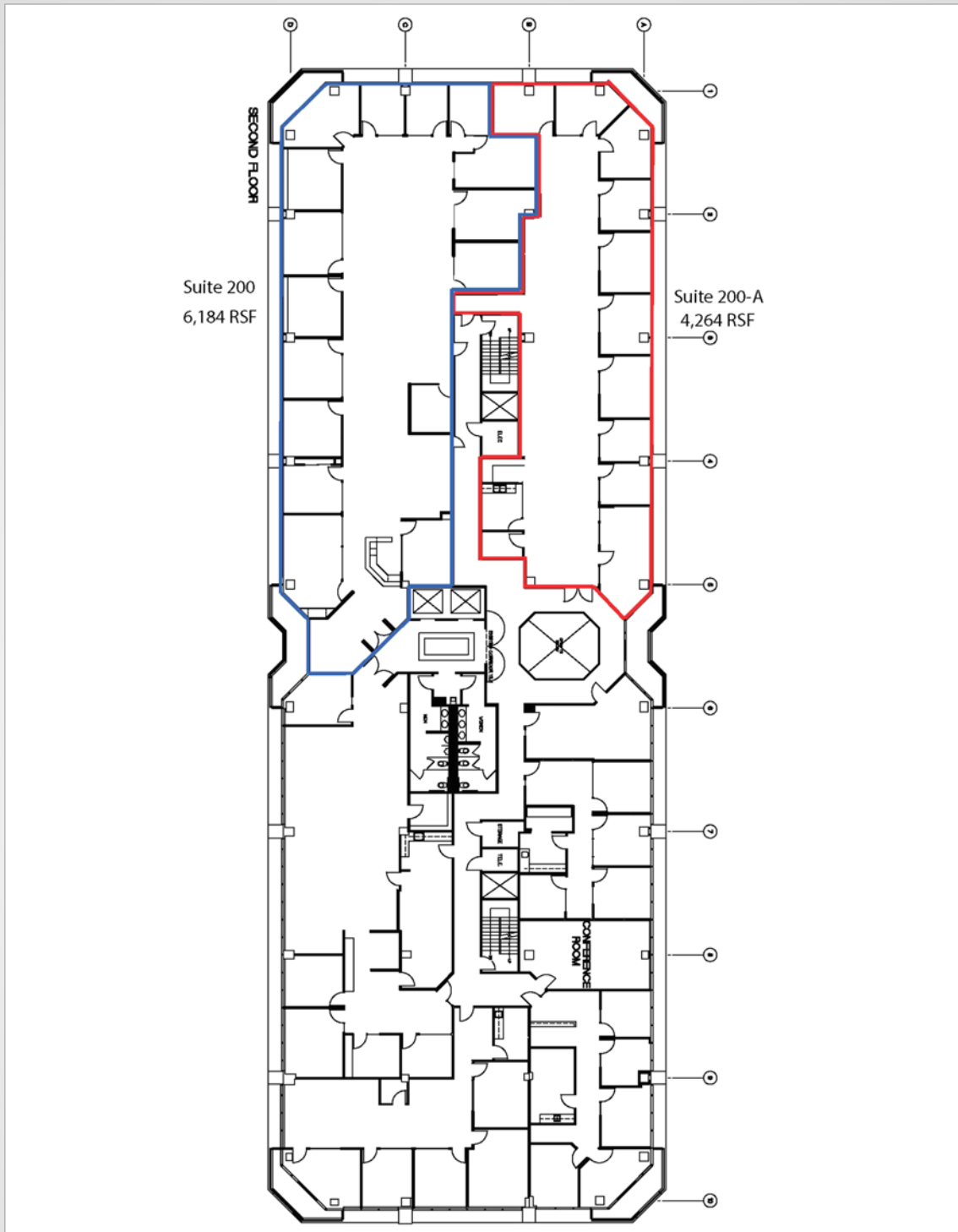



 Jim Ballard, Director of Leasing JBallard@stggroup.com | Kassandra Delgado, Leasing Associate Kdelgado@stggroup.com
1304 Southpoint Blvd., Suite 280, Petaluma, CA 94954 | 707.569.9000 Office | 707.569.8582 Fax | www.stggroup.com
Alaska, Northern California, Central California, Southern California, Oregon, and Washington

The above information, while not guaranteed, has been secured from sources we believe to be reliable. Subject to error, change or withdrawal. An interested party should verify the status of the property and the information herein.

OFFICE SPACE IN FOUNTAINGROVE FOR LEASE

3510 Unocal Place , Santa Rosa, CA

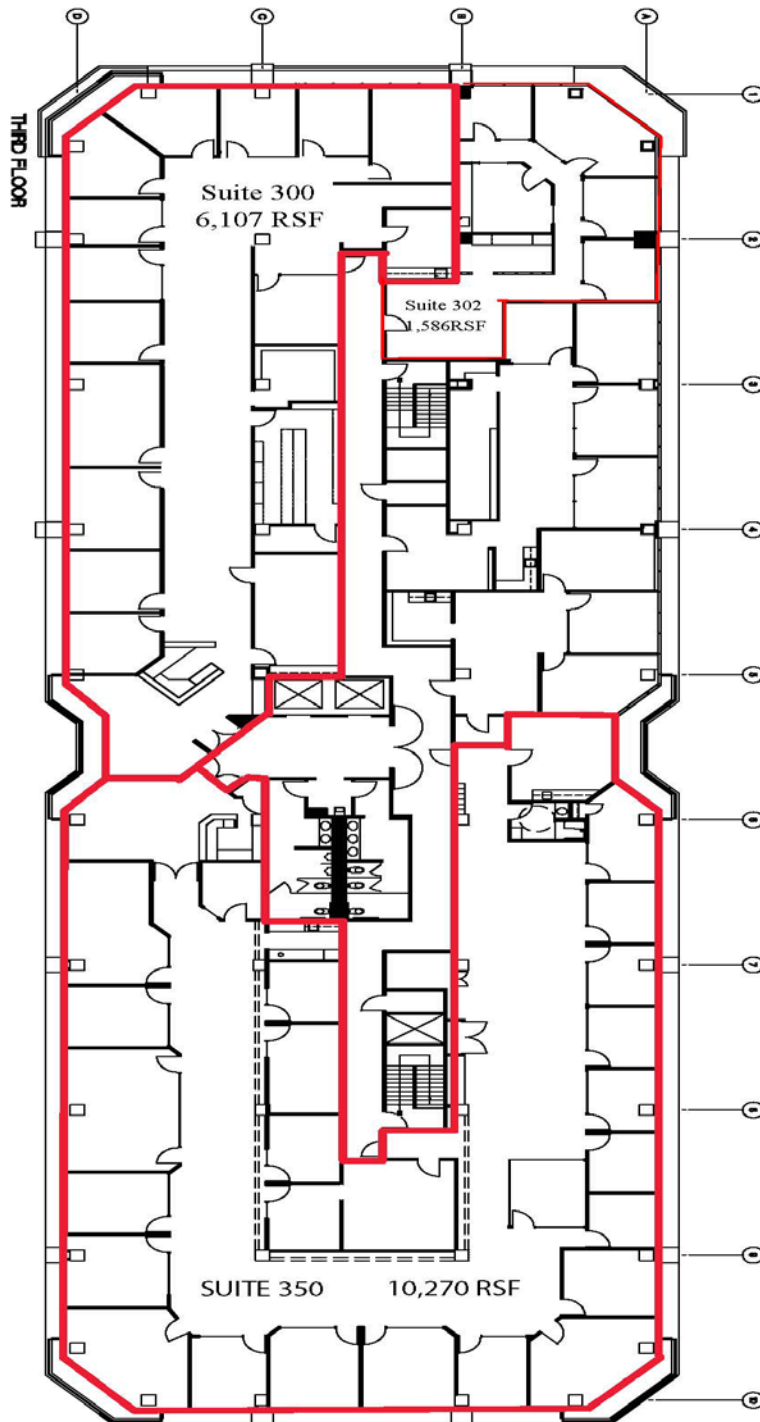



 Jim Ballard, Director of Leasing JBallard@stggroup.com | Kassandra Delgado, Leasing Associate Kdelgado@stggroup.com
1304 Southpoint Blvd., Suite 280, Petaluma, CA 94954 | 707.569.9000 Office | 707.569.8582 Fax | www.stggroup.com
Alaska, Northern California, Central California, Southern California, Oregon, and Washington

The above information, while not guaranteed, has been secured from sources we believe to be reliable. Subject to error, change or withdrawal. An interested party should verify the status of the property and the information herein.

OFFICE SPACE IN FOUNTAINGROVE FOR LEASE

3510 Unocal Place , Santa Rosa, CA



 Jim Ballard, Director of Leasing JBallard@stggroup.com | Kassandra Delgado, Leasing Associate Kdelgado@stggroup.com
1304 Southpoint Blvd., Suite 280, Petaluma, CA 94954 | 707.569.9000 Office | 707.569.8582 Fax | www.stggroup.com
Alaska, Northern California, Central California, Southern California, Oregon, and Washington

The above information, while not guaranteed, has been secured from sources we believe to be reliable. Subject to error, change or withdrawal. An interested party should verify the status of the property and the information herein.