



OFFICE SPACE FOR LEASE IN FOUNTAINGROVE

FOUNTAINGROVE CORPORATE CENTRE | 3510 UNOCAL PLACE, SANTA ROSA, CA

2,602 RSF (2nd Floor) - 10,449 RSF (2nd Floor) - 6,107 RSF (3rd Floor) OFFICE SPACE AVAILABLE



ALASKA, NORTHERN CALIFORNIA,
CENTRAL CALIFORNIA, SOUTHERN
CALIFORNIA, OREGON AND
WASHINGTON

WWW.STGGROUP.COM

**Starting at \$2.20 PSF
FULL SERVICE**

CONTACT

Jim Ballard | Director of Leasing
JBallard@stggroup.com

Alyssa Connor | Leasing Associate
ACConnor@stggroup.com

THE STG GROUP
1304 Southpoint Blvd., Suite 280
Petaluma, CA 94954
707.569.9000



OVERVIEW

- Close Proximity to Freeways
- Unparalleled views from class A offices in the prestigious Fountaingrove Area
- Easy access to walking paths
- Common Area Conference Room
- Parking Ratio 4/1,000 sf.
- Large Outdoor Terrace
- Attractive Office Spaces
- Energy Star building, green operations

SPACE AVAILABLE

Suite 200 +/- 10,449 RSF

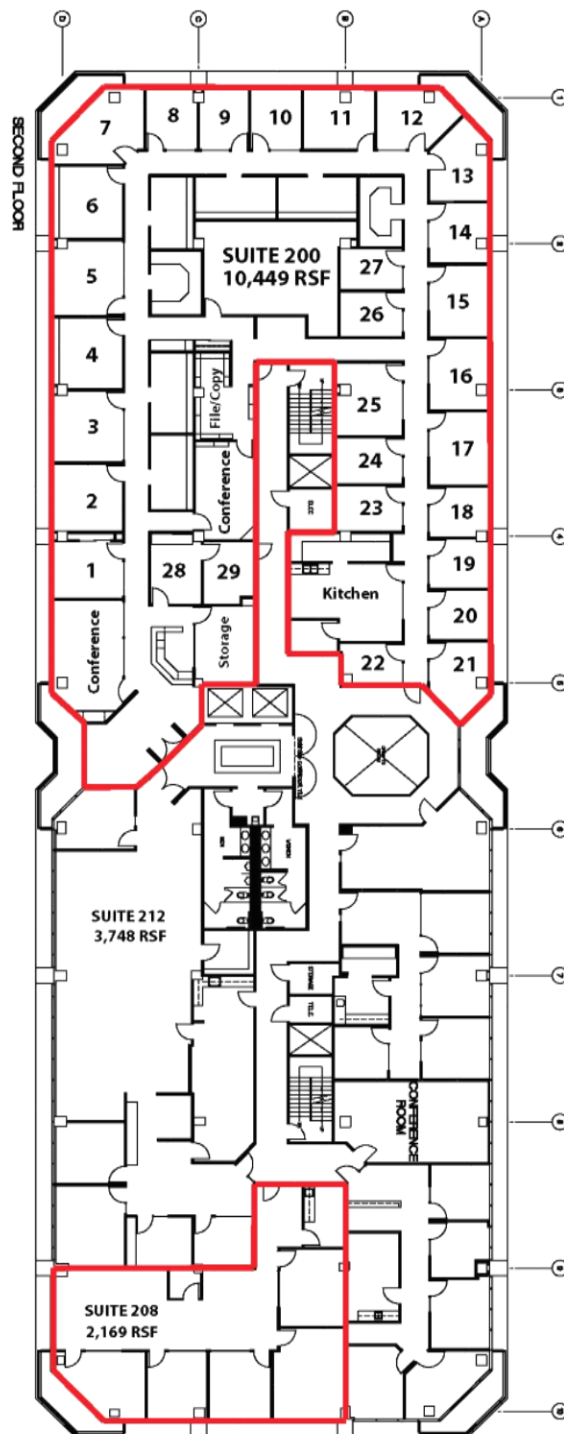
***Divisible up to +/- 7,000 RSF
(Available 09/01/2020)**

**Suite 208 +/- 2,602 RSF
(Available Immediately)**

**Suite 300 +/- 6,107 RSF
(Available 09/01/2020)**

OFFICE SPACE IN FOUNTAINGROVE FOR LEASE

3510 Unocal Place , Santa Rosa, CA

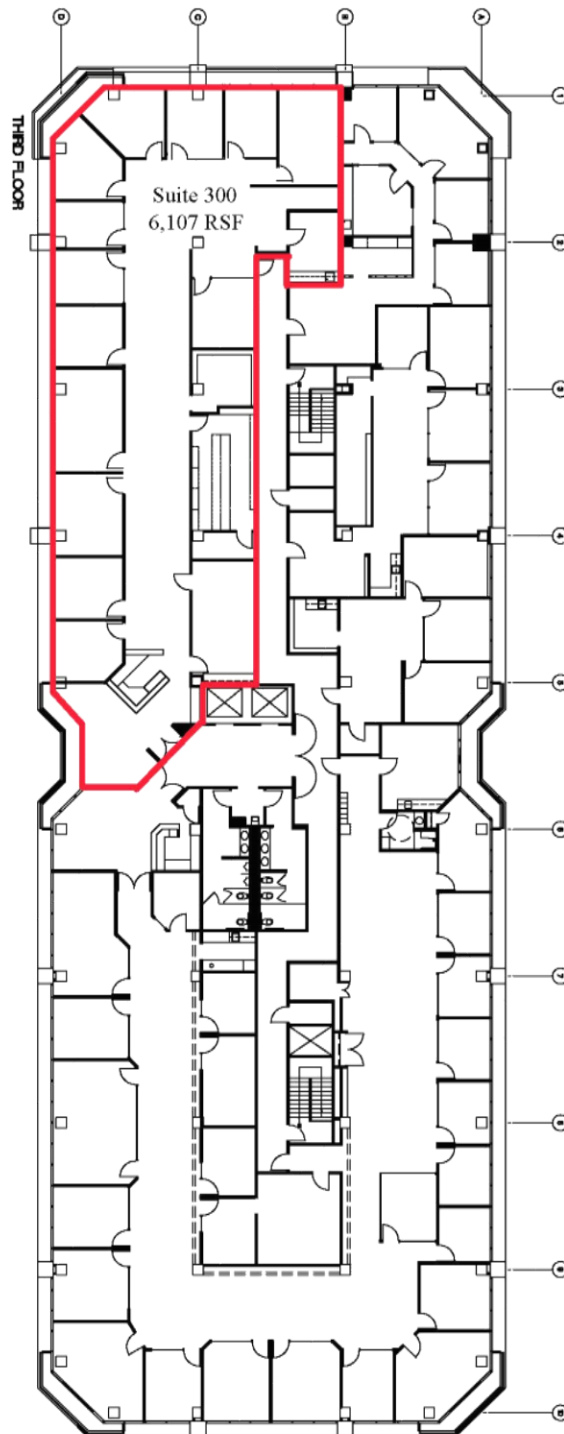


Jim Ballard, Director of Leasing JBallard@stgroup.com | Alyssa Connor, Leasing Associate AConnor@stgroup.com
1304 Southpoint Blvd., Suite 280, Petaluma, CA 94954 | 707.569.9000 Office | 707.569.8582 Fax | www.stgroup.com
Alaska, Northern California, Central California, Southern California, Oregon, and Washington

The above information, while not guaranteed, has been secured from sources we believe to be reliable. Subject to error, change or withdrawal. An interested party should verify the status of the property and the information herein.

OFFICE SPACE IN FOUNTAINGROVE FOR LEASE

3510 Unocal Place , Santa Rosa, CA



Jim Ballard, Director of Leasing JBallard@stggroup.com | Alyssa Connor, Leasing Associate AConnor@stggroup.com
1304 Southpoint Blvd., Suite 280, Petaluma, CA 94954 | 707.569.9000 Office | 707.569.8582 Fax | www.stggroup.com
Alaska, Northern California, Central California, Southern California, Oregon, and Washington

The above information, while not guaranteed, has been secured from sources we believe to be reliable. Subject to error, change or withdrawal. An interested party should verify the status of the property and the information herein.